

PAS128 – Type A Survey

Verification is the process of exposing a utility and subsequently measuring and recording its accurate location as well as other relevant attributes.

Verification of a utility that does not have access via a manhole or inspection chamber can be performed using one, or a combination of excavation techniques that protect the integrity of the utility.

Such techniques include, for example, vacuum excavation (air only), hydro or dual (air and hydro) and safe hand digging techniques.

For guidance on potential dangers of working near underground services and on how to reduce any direct risks to people's health and safety, as well as the indirect risks arising through damage to services, see HSE's Avoiding danger from underground services (HSG47)

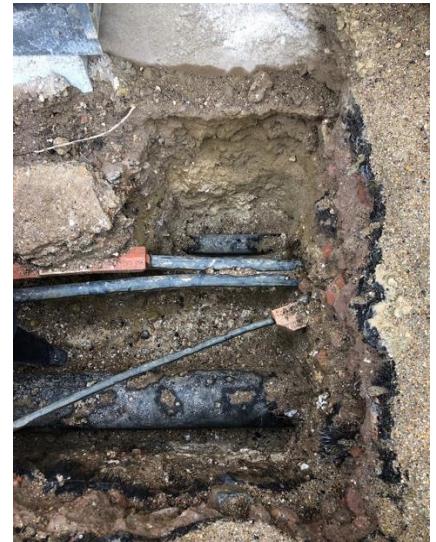


With Vacuum Excavation we can:

- Reduce damage to underground utilities
- Increase productivity and dig faster and safer than by hand
- Maintain excellent health and safety records
- Reduce site costs, in time & damage over conventional digging methods
- Reduce service strikes
- Reduce legal and environmental issues

For safe, effective, reliable and fast vacuum excavation, please call: **0800 689 5315** or download an **Information Request Form** from our website.

Vacuum Excavation is the only safe-dig option recommended by Safedigging for Verification and Confirmation of located underground utilities



Survey type A will comprise exposing the target utility(ies) within the survey area to confirm and record the location and other attribute data.

The quality level achieved will be documented as QL-A. The data will be obtained through visual inspection of the utility:

- 1) at access points such as in a manhole or inspection chamber; and/or
- 2) by its excavation and exposure.

